

## PACKAGE INCLUDES:



1. Shaft assembly
2. Velcro strap
3. Coil attachment bolt
4. Set of rubber washers
5. Set of mounting screws
6. Universal adapter plate

nuggets24  
0049700DETEKTOR  
004970035835867  
www.nuggets24.de

## THE LIST OF METAL DETECTORS COMPATIBLE WITH MARSMD UNIVERSAL SHAFT:

### Dovetail Mount

- AKA: Sorex, Berkut.

### Universal Adapter Plate Mount

- GARRETT: ACE 150/200/250/300/350/400, AT Pro, AT Gold.
- FISHER: F2, F4, F5, Gold Bug, F11, F22, F44.
- WHITE'S: Coinmaster, Coinmaster Pro, Prizm 3/4/5/6.
- TESORO: Cibola, Vaquero, Golden uMax, Outlaw, Silver uMax.
- TEKNETICS: Eurotek, Eurotek Pro, Alpha 2000, Delta 4000, Gamma 6000, Omega 8500, Digitek.
- BOUNTY HUNTER: Discovery 1100/2200/3300, Gold, Titanium, Quick Draw Pro, Lone Star Pro, Land Ranger Pro.

### Detector Stand Mount

- XP METAL DETECTORS: Adventis 2, ADX 150, G-Maxx 2, Gold Maxx Power.

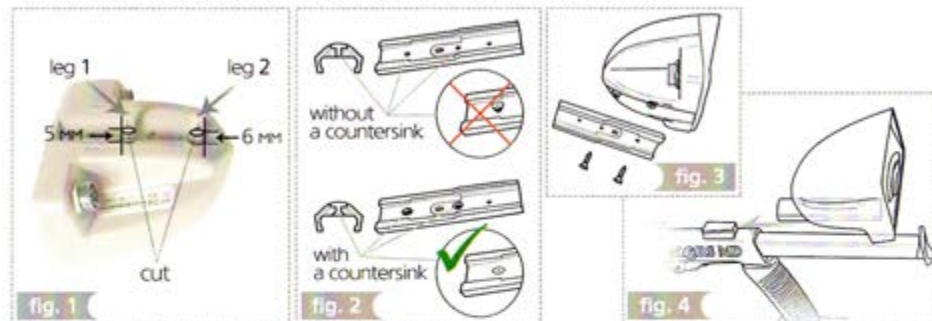
## PLEASE NOTE:

Mounting some metal detectors (Garrett, White's) on the MarsMD universal shaft implies slight modifications of their construction that should be carried out according to the manufacturer's instructions. These modifications don't affect the metal detector operation, but are irreversible.

BY WAY OF EXAMPLE LET'S CONSIDER AN OPTION OF ATTACHING SOME METAL DETECTOR CONTROL BOXES TO THE UNIVERSAL ADAPTER PLATE:

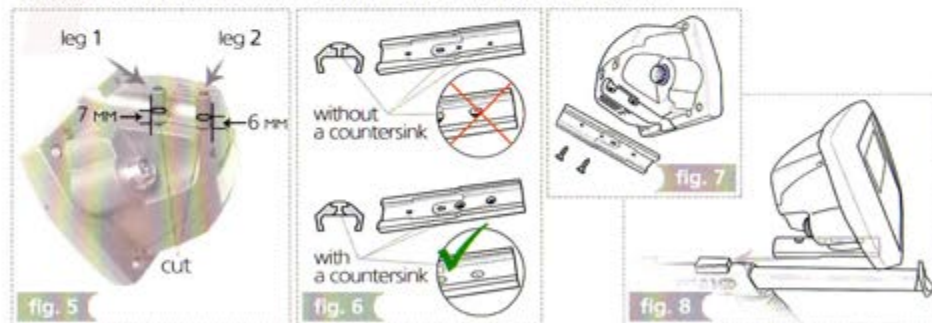
## GARRETT ACE 150/200/250/300/350/400:

1. Use cutting tools to shorten the control box mounting legs (fig. 1) in such a way that the resulting height of the leg 1 is 5 mm, and the height of the leg 2 is 6 mm.
2. Make a countersink hole on the inside of the universal adapter plate (fig. 2).
3. Attach the detector control box to the universal adapter plate using self tapping screws DIN 7982, size: 2.9x13 mm (fig. 3).
4. Mount the metal detector on the MarsMD universal shaft (fig. 4).



## WHITE'S COINMASTER / COINMASTER PRO:

1. Use cutting tools to shorten the control box mounting legs (fig. 5) in such a way that the resulting height of the leg 1 is 7 mm, and the height of the leg 2 is 6 mm.
2. Make a countersink hole on the inside of the universal adapter plate (fig. 6).
3. Attach the detector control box to the universal adapter plate using self tapping screws DIN 7982, size: 4.8x16 mm (fig. 7).
4. Mount the metal detector on the MarsMD universal shaft (fig. 8).



For attaching the universal adapter plate to metal detector control boxes the following screws are used:

1. Garrett ACE 150/200/250/300/350/400, AT Pro, AT Gold – a cross recessed countersunk flat head tapping screw DIN 7982 2.9x13 mm
2. Fisher F2/ F4/ F5 – a countersunk head screw DIN 965 M4x16  
Fisher F11/ F22/ F44 – a countersunk head screw DIN 7991 UNC №8-32x3/4
3. White's Coinmaster / Coinmaster Pro – a cross recessed countersunk flat head tapping screw DIN 7982 4.8x16 mm
4. Teknetics Alfa 2000/ Delta 4000 / Gamma 6000 / EurotekPro – a countersunk head screw DIN 7991 UNC №8-32x3/4
5. Bounty Hunter Gold / Titanium – a countersunk head screw DIN 965 M4x16